

Children's Home



EVERY CHILD DESERVES A SAFE PLACE

Continuum of Care

MISSION STATEMENT

The Mission of the Children's Home is to enhance the safety, stability, and well-being of our children, families and their communities.

We do this by providing comprehensive professional services that include residential, educational, preventive and therapeutic care.

VISION STATEMENT

The Children's Home will become one of the best providers of comprehensive children and family services in New York State.

VALUES & PRINCIPLES

Hope - We believe in the possibility for growth, change and forgiveness. We nurture that belief in ourselves and others.

Healing - We promote a climate where people feel safe and experience improved physical, emotional and spiritual health.

Caring - We show compassion in how we treat others. We show sensitivity to their concerns, problems or pain. We reassure them that they are not alone.

Respect - We see the best in others regardless of who they are. Our words and actions recognize the special needs and individuality of each person we serve or with whom we work.

Integrity - We are honest in what we say and do. Honesty and competence are fundamental in developing trust.

Responsibility – We hold ourselves accountable for our decisions and actions. We believe every person has the capacity to make decisions and understand the consequences.

Collaboration - We use teamwork to accomplish more than any of us could working alone. We believe we can best serve and care for others by blending the talents and dedication of many caring people and organizations.

Stewardship - We make wise use of the resources entrusted to us.

WHO WE SERVE

Our programs provide a safe and therapeutic environment which includes clinical, child care, medical, educational, spiritual and recreational components for at-risk and vulnerable children with mental health issues and emotional problems, and their families. Our present geographic area includes many of the counties throughout the New York State region.

HOW WE SERVE –Programs and Services

Community Based:

- Children's Home Preventive Services (CHPS)
- Day Treatment Program
- Family Support Program (FSP)
- Therapeutic After-School Program (TASP)
- Wilderness Adventure Program (WAP)

Residential Care:

- Ardsley Road Group Home
- Boys' Group Home
- Close to Home Foster Care Program
- Diagnostic Center
- Emergency Shelter
- Haskins' Non-Secure Detention Facility
- Residential Treatment Center (RTC)
- Supervised Independent Living Programs (SILP)
- Wendy's Wonderful Kids Adoption Program

Services:

- Clinical Services
- Education Program
- Friendship and Mentoring
- Health Services
- Independent Living Skills
- Planning and Performance Improvement
- Recreation
- Spiritual Life
- Staff Education and Development

Support Services

- Business and Information Technology
- Community and Donor Relations
- Facilities Management
- Food Service

Program and services descriptions follow in the order listed above.

ACCREDITATIONS

- Council on Accreditation of Services for Families and Children, Inc.

LICENSES

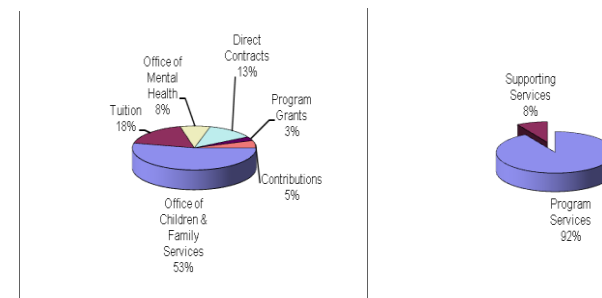
- New York State Office of Children and Family Services
- New York State Office of Mental Health
- Department of Education and Board of Regents of the University of the State of New York
- New York State Office of Mental Retardation and Developmental Disabilities

MEMBERSHIPS

- Council of Family and Child Caring Agencies
- Coalition of 853 Schools
- Alliance for Children & Families
- Juvenile Detention Association of New York State

FINANCES

The Children's Home is a private, non-profit voluntary agency which receives funding through the NYS Office of Children and Family Services, the Office of Mental Health, the State Education Department, the Medicaid Program, grants, congregations, services groups, corporations, businesses and individuals.

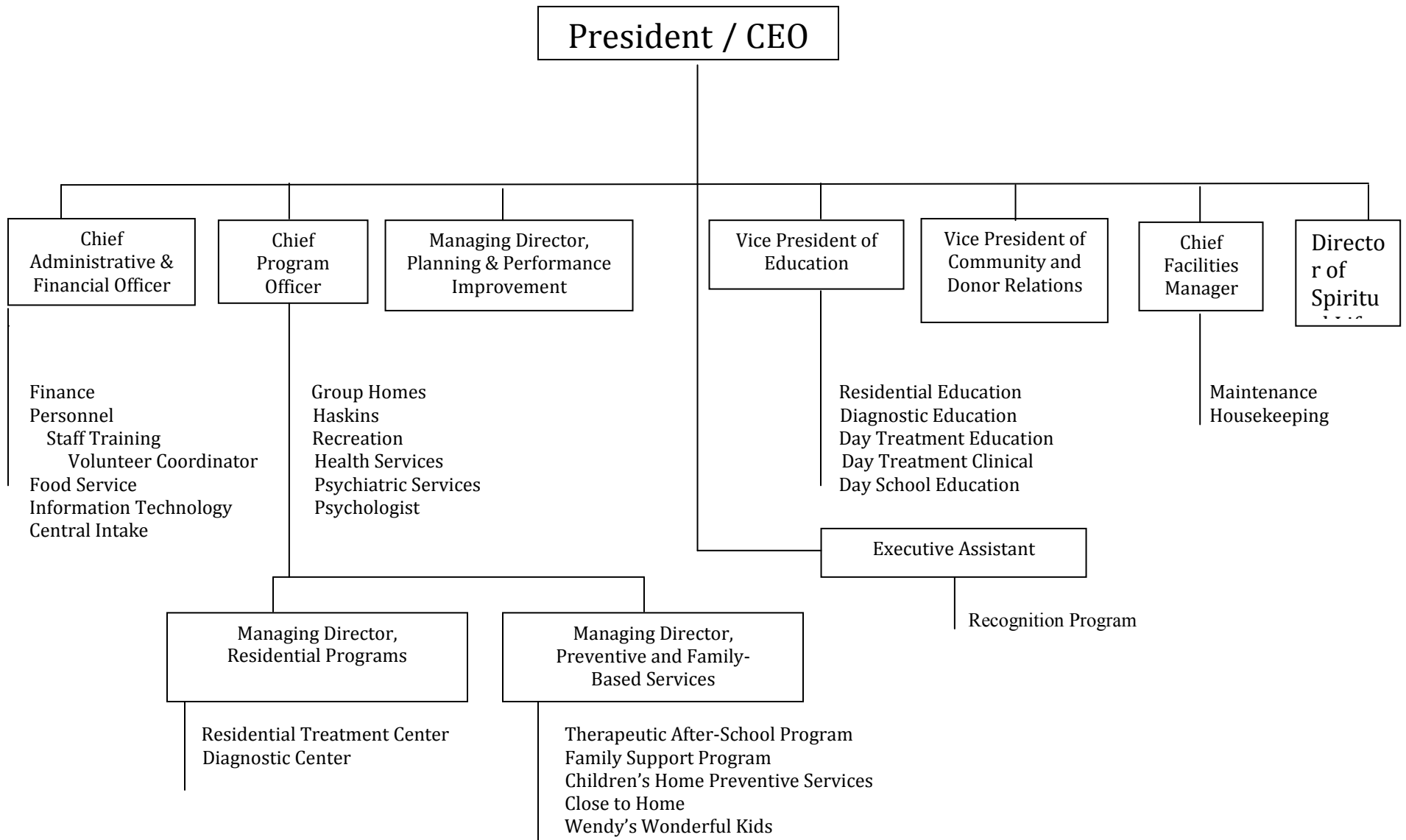


*The Children's Home is an equal opportunity employer.
Services are provided without regard to race, color, religion or national origin.*

Serving Children and Families Since 1912

September 2009

CHILDREN'S HOME – ADMINISTRATION



MANAGEMENT STAFF

Robert Allman, MS, *Managing Director of Residential Programs*
Carol Aronowitz, LMSW, *Managing Director of Planning and Performance Improvement*
Maria Cali, CAS, *Vice President of Education*
Kelly Clark, LCSW, *Director of Day Treatment*
Dorothy Condon, MS, *Coordinator of Staff Development and Training*
Paul Gerrer, MSS, *Director of Recreation*
Patricia Giglio, CPA, *Chief Administrative and Financial Officer*
Tina Gilmore, *Director of Haskins' Non-Secure Detention*
Maxwell Ginty, *Director of Group Homes*
James Hall, *Director of Information Technology*
Catherine Harvey, LMSW, *Director of Diagnostic Center*
Pamela Harding, MA, *Director of Close to Home Foster Care Services*
Elizabeth Hickey, LMSW, *Director of Special Programs*
Robert (Chip) Houser, MSW, *President/CEO*
Gerard Latopolski, LCSW-R, *Director of Clinical Services*
Ann Maclaren, *Controller*
Rebecca Mebert, *Vice President of Community and Donor Relations*
Frederick Mohrien, *Managing Director of Preventive and Family Based Services*
Christine Murphy-Gates, *Central Intake Coordinator*
Dana Nauerz, CAS, *Director of Education*
Terry Potter, MS Ed, *Director of Family Support Program*
Michelle Reynolds, RN, *Nurse Manager*
Kathleen Romer, *Chief Program Officer*
Kathryn Stacey, *Volunteer Coordinator*
Kim Stratton, MSW, *Director of Therapeutic After-School Program*
Daniel Thomas, *Chief Facilities Manager*
William Townsend, DMin, *Director of Spiritual Life*
William Trass, MSW, *Director of Preventive Services Program*
Gary Valentine, *Director of Food Service*
Jean Westcott, MS, *Director of Personnel Services*

REFERRAL PROCEDURE

Children are referred to us by the Department of Social Services, the Office of Mental Health, school districts, and the courts.

All referrals for the Children's Home programs are sent to the Central Intake Coordinator. After review of the referral, if deemed appropriate for the respective program, a pre-placement interview is scheduled.

It is communicated to the referral source at that time that their participation in the interview process (along with the child and the parent/guardian) is a very important part of the decision in regard to appropriateness for placement. Parental/guardian and referral source involvement throughout treatment in any of our programs is an essential part of the child's success while in placement.

Once a child has been accepted into a program, an acceptance letter is completed and sent to the referral source along with an authorization packet. The child is then placed on a waiting list.

Admissions are generally prioritized by acceptance date, taking into consideration the factors of the program openings (age and gender, etc). The Children's Home will ensure that all persons referred for services will be treated equitably and without regard to race, income, or religion.

For program specific referral/admission procedures, please refer to the individual program description.

PROGRAMS

COMMUNITY BASED

CHILDREN'S HOME PREVENTIVE SERVICES (CHPS)

DESCRIPTION

The Children's Home Preventive Services (CHPS) provides family-focused, child-centered preventive services for families referred from the Broome County Department of Social Services. Direct services include home visiting, counseling and case planning.

CLINICAL SERVICES

All clients receive clinical services as detailed under "Services."

Services include, but are not limited to, parent skills training; parent coaching, teaching and support; relationship building; advocacy and building self-sufficiency skills. These services may be provided by CHPS staff in individual and group sessions, including parent education classes or through arrangements with other program staff or community agencies.

SERVICES

We promote parent-school connection and involvement. We provide education services and advocacy such as assistance with school issues, mediation, attendance, correct school placement, the Committee on Special Education (CSE) process, and supporting parent involvement.

We use the Coordinated Care Services, Inc. (CCSI) wrap around approach for our families which includes the management of referrals and services, and wraparound meetings to help families strengthen and build their own support network.

The Children's Home provides Continuum of Care encompassing 16 programs with a wide array of professional and support staff willing to work in a team approach when necessary to assist the CHPS staff in providing the best possible services to children and families.

POPULATION

The CHPS program serves families and children from birth to eighteen years of age who have been referred by the Broome County Department of Social Services.

DAY TREATMENT PROGRAM

DESCRIPTION

The Day Treatment Program is a unique, twelve-month school program which integrates intensive clinical and special education services. This program, which is dually certified by the Office of Mental Health and the State Education Department, provides out-patient services to children and their families living in Broome, Chenango and Delaware Counties. The primary reasons for referral are mental health issues and/or an inability to function appropriately in their home and school settings. The treatment team includes: psychiatrist, psychologist, social worker, special education teacher and teacher aide, nurse, speech therapist, and a remedial reading teacher. Day Treatment is a strengths-based program that helps children meet their belonging and mastery needs by providing psychotherapy and skills building services in addition to emotional, behavioral and academic support.

CLINICAL SERVICES

All clients receive clinical services as detailed under "Services."

Social workers provide individual and group counseling to the children and also provide advocacy and linkage services. The psychologist provides psychometric testing. Nurses in our clinic provide nursing assessments, screenings, dispense medication and maintain records regarding its effects. A speech therapist is available for the purpose of assessment, on-going treatment and remedial work. A remedial reading teacher provides assessment and on-going remedial reading when necessary.

POPULATION

Boys and girls ages 5 to 12 at admission with a Committee on Special Education classification. Additionally, children must have a psychiatric diagnosis and demonstrate functional deficits at home, school or with their peer relationships.

COST

The cost of the program is divided into educational tuition and clinical costs. The tuition rate will be billed to the home school district. The clinical cost rate will be covered by Medicaid or third party insurance.

REFERRAL/ADMISSION PROCESS

Referrals can be accepted from the school districts. All referrals must be approved by the child's Committee on Special Education. Packets must include: school records, psychological and social history, report cards and immunization records and can be sent to the Program Director.

FAMILY SUPPORT PROGRAM (FSP)

DESCRIPTION

The Family Support Program addresses the needs of both the individual child and the family system by including both a therapeutic after-school program and intensive family counseling. The FSP transports youngsters from school to the program site each day after school and then returns them home in the evening.

CLINICAL SERVICES

All clients receive clinical services as detailed under "Services."

Planning conferences to determine treatment goals are held at thirty days, ninety days, six months, and every six months thereafter. Parents, service providers, and involved family are invited to attend.

SERVICES

The child care staff of the Family Support Program provide ongoing supervision of youngsters during program hours and is involved in providing transportation, tutoring, arts and crafts, and recreation programming to youngsters.

SUMMER SESSION

The Family Support Program Summer Session is a highly structured summer day camp offering various recreational programming including: swimming instruction, park trips, and participation in a variety of summer recreational activities which take place throughout Chenango County.

POPULATION/LENGTH OF STAY

The Program serves at-risk Chenango County children from ages 7 to 12 upon admission. The program capacity is 14 children and their families. Children are chosen from families that demonstrate difficulty meeting the needs of their children, thereby placing them at risk of being placed out of the home. Participants are selected based upon their appropriateness for the Program among other services provided by the Department of Social Services and the County. Children must have an IQ of 70 or above and may not have a history of alcohol or substance dependency.

Length of stay in the program averages two and one-half years.

REFERRAL/ADMISSION PROCESS

For a potential referral to the Program, a case must be opened at the Chenango County Department of Social Services.

THERAPEUTIC AFTER-SCHOOL PROGRAM

DESCRIPTION

The Therapeutic After-School Program (TASP) provides preventive services for at-risk Broome and Delaware County youngsters in a structured and therapeutic setting.

CLINICAL SERVICES

All clients receive clinical services as detailed under "Services."

Planning conferences are held at sixty days, six months and every six months thereafter. Parents and representatives from the school systems and other agencies who are providing services to an individual youngster and family are invited to attend.

EDUCATIONAL SERVICES

Youngsters receive a daily educational segment during the school year. Staff help youth with organization skills, homework and staying on task. Educational support services are provided within the school to help children focus during the day. The attention given to each child during school hours often allows less disruption and an enhanced learning experience.

TASP social workers advocate for children's needs during Committee on Special Education meetings. Staff provide supervision of youngsters and are involved in providing transportation, tutoring, arts and crafts, and recreation programming. Children are also exposed to and are involved in various cultural activities and adaptive recreational programming.

SUMMER SESSION

TASP Summer Session is a highly structured summer day camp offering various recreational programming as well as participation in a variety of activities which take place throughout Broome County. Staff supervise some children over 12 years of age in pre-vocational training/work programs at the Humane Society and Children's Home campus. The youth assist in various duties and receive workpay for their time.

POPULATION

TASP serves at-risk children and adolescents from ages 8 to 16 who have demonstrated a level of acting out behavior and/or emotional disturbance at home, school or in the community. Children must have an IQ of 70 and may not have assaultive behavior, or a history of alcohol or substance dependency.

REFERRAL/ADMISSION PROCESS

To make a referral contact Central Intake at Broome County Department of Social Services.

WILDERNESS ADVENTURE PROGRAM (WAP)

Wilderness Adventure Program (WAP) provides an experiential, non-traditional way of working with children. WAP offers a unique training and education experience which utilizes the beauty and adventure of the great outdoors as a back drop and catalyst to promote growth of character, to learn trust and confidence and strengthen decision-making ability.

The heart of the program is the challenge ropes course. Ropes courses are vertical obstacle courses that contain various elements. They require extensive use of safety equipment to keep participants from danger. Participants are faced with a perceived risk that allows them to manage a natural discomfort with heights, while using safety equipment to reduce real risk and to develop trust. Ropes courses challenge individuals and provide opportunity for learning about risk taking, perceived versus real limits, performing under pressure, giving and receiving support from others, working to achieve more than they thought they could. Ropes courses can be seen as the ultimate challenge for groups or individuals. The process of meeting and overcoming these progressive challenges serves as a powerful opportunity for group interaction and personal growth.

“Behavior Management Through Adventure” is a systematic approach to promoting positive behavior for at-risk youth and youth with mental and emotional challenges. Using a continuum of behavior supports and proactive strategies, this model raises academic and behavior outcomes and allows children to remain in, or return to, the least restrictive environment. Benefits include improvement in communication skills, improvement of coping skills, achievement of behavior goals, development of individual accountability and ultimately, greater academic success.

The Children’s Home has a highly trained and accredited professional staff with safety as our main concern. Staff members are certified in three areas. All staff must be re-certified annually, logging the required number of hours per month to meet the re-certification standards. Additionally, the course is inspected regularly by our staff, and annually by the accrediting agency.

All of our residents have an opportunity to experience the Wilderness Adventure Program on a rotational basis through their living units.

This program is also open to community, civic and corporate groups.

PROGRAMS **RESIDENTIAL CARE**

ARDSLEY ROAD GROUP HOME

PROGRAM DESCRIPTION

This community-based group home serves younger children, ages 7 to 13 who are in need of placement.. It serves as a discharge resource and transition for children in Residential Treatment Centers. A 24-hour supervised, co-ed home, it strives to ensure that each child and family’s strengths are enhanced through a multi-faceted service delivery approach to help them realize their maximum potential.

CLINICAL SERVICES

All clients receive clinical services as detailed under “Services.”

EDUCATION

The residents attend public school programs. Special needs are supported through staff assistance.

BOYS’ GROUP HOME

DESCRIPTION

This community-based group living situation offers a semi-supervised environment in which adolescent male ages 13 to 21 can grow and better develop educational, behavioral, independent living and socialization skills. The Group Home also serves as a transitional placement for those boys leaving a structured institution who are not ready to return to a less structured foster home, home or independent living situation. Staff teach life skills, and provide supervision and direction in a positive non - institutional living environment. The residents must participate in a school, work or vocational training program.

CLINICAL SERVICES

All clients receive clinical services as detailed on page .

EDUCATION

The residents attend public school programs. Special needs are supported through staff assistance.

CLOSE TO HOME FOSTER CARE PROGRAM

DESCRIPTION

The Close to Home Foster Care Program is licensed by the New York State Office of Children and Family Services and is comprised of three different levels of care.

The program provides positive, structured experiences in a safe and nurturing family environment for children and adolescents who have significant social, emotional, behavioral and/or physical problems. The specialized and therapeutic levels provide intensive, family-based, individualized treatment programs designed to modify behaviors, causes, and conditions for children who might otherwise be placed in an institutional setting due to their high level of needs and severe behaviors.

Children live with foster families and attend public school. A team of social workers, parents, foster parents and others work to identify problems and develop the best plan for the child's future. After placement, a child may return to his or her birth family, be placed in an adoptive home, or move out on his/her own. The specialized and therapeutic levels also provide weekly visitations at the foster home by a child care worker and quarterly individual behavioral evaluations to referring agency.

CLINICAL SERVICES

All clients receive clinical services as detailed under "Services."

There is intensive casework support for both foster and birth families as well as ongoing training for foster parents. Where family members remain involved with children, intense family-focused treatment will be implemented. An ecological-behavioral approach to therapeutic treatment is used. The behavioral aspect of treatment focuses on very specific and measurable treatment goals.

Throughout a child's placement, coordination of services is maintained between the Children's Home, Department of Social Services, and other community agencies. Each agency participates in treatment and planning with the birth and foster family.

POPULATION

Children and adolescents, from birth up to their twenty-first birthday, who are in the custody of the Department of Social Services and who are experiencing significant psychological, social, emotional, behavioral, or physical problems may be placed with Close to Home.

REFERRAL/ADMISSION PROCESS

Children must meet various criteria for placement in regular, specialized and/or therapeutic foster care. Referrals are made to the Director of Close to Home by fax (607 - 723-2617), mail, telephone (607 -772-6904), or during a regular meeting between the Director and the DSS home-finding liaison.

DIAGNOSTIC CENTER

DESCRIPTION

The multi-service Diagnostic Center evaluates and helps meet the needs of young people and their families to strengthen coping abilities. It is a New York State Department of Social Services (DSS) licensed assessment program providing up to 90 days of comprehensive inpatient diagnostic testing and evaluations in a structured, therapeutic setting.

Professional staff preparing reports include a board-certified child psychiatrist, psychologists, school-certified special education teachers and social workers. Final reports include psychiatric evaluation, psychological evaluation, social assessment, behavioral/independent living assessment, recreation assessment, educational evaluation and medical evaluation.

CLINICAL SERVICES

The social worker is the primary contact person to the referral source (DSS or CSE) and works closely with him/her on discharge planning. The social worker is the main link between the program and the family. Social workers conduct interviews, assessments and supportive counseling including training in the use of Dialectical Behavior Therapy skills.

The board certified child and adolescent psychiatrist interviews the residents and, with input from the team, makes decisions regarding diagnosis and medication. The diagnostic psychologists conduct interviews, intelligence testing, and various scales and assessments to determine psychiatric, personality, or functioning issues.

SERVICES

The family life specialists and recreation specialist are an integral component of the professional team, providing ongoing supervision of youngsters in a staff-secured, positive learning environment. Residents are required to participate in planned therapeutic activities daily.

POPULATION/ LENGTH OF STAY

Eighteen boys and girls ages 4 to 17 who exhibit psychological, emotional and behavioral problems. Stay is 30 to 90 days, depending on evaluation and recommendations.

REFERRAL SOURCE INVOLVEMENT

Children referred by DSS are in the custody of DSS. Children referred through the school district's committee on special education remain in parental custody. DSS/CSE attend the case conference during the fourth week of residence for final recommendations and to coordinate discharge planning. The referral source will make all referrals for placement and follow up care

EMERGENCY SHELTER

DESCRIPTION

The Emergency Shelter is a group care facility that provides confidential, around the clock care and supervision for ten children, ages 4 to 15. The Shelter provides a structured, nurturing living environment in which daily program routines help to establish a sense of security through predictability and consistency.

CLINICAL SERVICES

All clients receive clinical services as detailed under "Services."

POPULATION/ LENGTH OF STAY

Boys and girls who are in need of respite or stabilization prior to return home or to placement. Children will not be accepted to the program if they are currently under the influence of drugs or alcohol, are a danger to themselves or others, are eligible for detention, or if they are in need of 24-hour nursing care.

All children placed at the Emergency Shelter are in the custody of the Department of Social Services and therefore have a county caseworker. The caseworker plays an integral part in the placement, planning and discharge of the child from the Shelter.

Due to the emergency nature of the Shelter program, the length of stay varies for each child. Some children may need Shelter emergency services for only one day, whereas another child may be placed at the Shelter with an unsure future. In any case, the maximum length of stay for any child is 90 days.

REFERRAL/ADMISSION PROCESS

The Emergency Shelter is open for referrals and subsequent intake 365 days a year, 24 hours a day. All referrals are through the Broome County Department of Social Services Home-Findings Unit during business hours OR an Emergency Social Services Representative on evenings, holidays and weekends.

HASKINS' NON-SECURE DETENTION FACILITY

DESCRIPTION

The Haskins' Facility is a non-secure detention program licensed by the New York State Office of Children and Family Services to provide short term care to youth awaiting court proceedings or placement decisions by community and/or state agencies. The program is a safe, secure, structured program providing care and supervision to children during times of uncertainty and difficulty. The Haskins' Facility is the only youth detention placement available to Family Court Judges in Broome County.

CLINICAL SERVICES

The program director and case workers serve as a facilitative link between the child, family court, and community agencies. The staff arrange and supervise family visitation at the facility in order to maintain meaningful family contact.

The professional staff provide highly structured short-term care in a setting and manner which permits those working with the youth, and the youth themselves, an opportunity to adequately plan and prepare for their future.

The youth attend a self-contained classroom in the on campus school which enables them to remain current with their school work. The child's academic ability and individual needs are assessed by the education staff through screening and classroom observation.

The children receive medical services as well as recreational programming which serves as a positive outlet for their energies.

POPULATION/ LENGTH OF STAY

Haskins is a co-ed facility for males and females ages 8 to 18 who meet the criteria for admission into detention according to Family Court regulations. The 12 bed facility provides short term care, 30 to 90 days. Children remain in the facility, on average, for less than 90 days.

REFERRAL/ADMISSION PROCESS

Youth are placed in the Haskins' Non-Secure Detention Facility through and by Family Court.

Emergency admissions (during non-court hours) are accepted where appropriate and on an as-needed basis.

RESIDENTIAL TREATMENT CENTER

DESCRIPTION

The Residential Treatment Center creates a safe, secure, 24-hour supervised setting to motivate and assist children in reuniting with their families and taking their place in a normal community setting. It is the goal of the Children's Home to teach and empower children to become productive, contributing members of society.

CLINICAL SERVICES

All clients receive clinical services as detailed under "Services."

SERVICES

Family life specialists meet the basic living needs of the child, serve as role models, are a vital link with other treatment team members in providing information on the child's daily progress, and provide a safe, nurturing and therapeutic environment in the residential living units.

Medical services strive to promote positive health habits in a pro-active manner through education. Children receive instruction in hygiene, sexuality, drugs, alcohol, and AIDS.

Recreational programming offers personal fulfillment in developing the interests and skills of each individual.

POPULATION/LENGTH OF STAY

Forty-eight boys and girls, ages 7 to 17, who are exhibiting a level of social and/or emotional disturbance which warrants a supervised treatment setting. While the residential treatment center serves children throughout New York State, most referrals are received from the Central New York region and surrounding areas. Average length of stay is 12 to 18 months.

SUPERVISED INDEPENDENT LIVING PROGRAM

DESCRIPTION

The Supervised Independent Living Program (SILP) is the final phase before complete independence from placement. The program includes a Parent/Child program and Supportive Housing components.

Adolescents are provided with support and assistance in transitioning to total independence. SILP has a focus of responsibility on the youth, with a philosophy of learning by doing. The program provides youth with a subsidized community-based apartment while teaching life skills necessary to achieve independence through a "skills-based" approach. It can include short-term housing for youth displaced due to loss of housing and/or youth who are away at college and in need of a residence during breaks.

The professional staff includes a program coordinator and specially trained supportive advocates. This program also offers emotional support and guidance, individual and family counseling, educational support, recreation planning, medical services, case management and aftercare.

CLINICAL SERVICES

All clients receive clinical services as detailed under "Services."

POPULATION/LENGTH OF STAY

Adolescent males and females age 16 to 21 who demonstrate an ability to function in the community, at school and at work with minimal supervision. The youth may remain in the SILP until the age of 21 if warranted.

This program excludes youth who are a danger to themselves or others, psychotic, have an IQ below 70 and those chemically dependent and untreated.

WENDY'S WONDERFUL KIDS ADOPTION PROGRAM

DESCRIPTION

The Adoption Program is funded through a grant from the Dave Thomas Foundation for Adoption. The Children's Home is part of Wendy's Wonderful Kids, a nationwide program with the goal of placing foster care children in permanent adoptive homes.

The grant supports an adoption recruiter whose work is to use aggressive child-focused recruitment strategies targeted exclusively on placing foster care children with loving, adoptive families.

The program is grounded in the following beliefs:

- Every child deserves to live in a safe, loving and permanent family.
- No child should linger in foster care or leave the system at age 18 without a permanent family of their own.
- No child is unadoptable.

SERVICES

Our adoption recruiter employs a very specific child-focused recruitment strategy for each of the children on the caseload.

Child-Focused Recruitment is a process that focuses exhaustively on each child's individual history, experiences, and needs in order to find the appropriate adoptive family. The recruiter works closely with each child and their caseworker to develop trust and first-hand knowledge so that a customized recruitment plan can be developed and carried out for each child.

The adoption recruiter conducts a diligent search of potential adoptive families.

POPULATION

Any child in the foster care system who is free for adoption is eligible for our adoption services. The caseload is 20 to 25 cases with 12 to 15 children in an intensive recruitment phase at any one time.

REFERRAL PROCESS

Children are referred by their Department of Social Services caseworkers for our adoption services. Children can be in placement in a foster home, group home or residential treatment facility.

For more information about our services call 607 221-0316.

SERVICES

CLINICAL SERVICES

The Children's Home operates a vast array of treatment programs designed to meet the needs of children from birth to age 21 in a variety of settings. The Children's Home operates an on-campus Residential Treatment Center designed to treat 48 boys and girls ages 7 to 17 who are exhibiting a level of social and /or emotional disturbance for which residential care is necessary. Other on-campus programs include Haskins' Non-Secure Detention Facility, Day Treatment Program and the Diagnostic Center. Other residential and community programs include the Close to Home Foster Care Program, Wendy's Wonderful Kids Adoption Program, Emergency Shelter, TASP, Family Support Program, SILP, CHPS, Boy's Group Home, Ardsley Road Group Home.

Each program offers an individual treatment approach in dealing with children in the respective setting. All children receive an assessment of their individual needs based on the issues that presented the child to the program. An evaluation is performed from mental health professionals in the area of psychiatry, psychology and social work. All residential programs are child centered and provide a safe, structured, nurturing living environment in which positive daily routines are established to provide a sense of security through predictability and consistency.

All programs have a social worker assigned to provide services to the child and family in that respective program. The social worker provides a wide array of clinical services including individual and group therapy, family therapy and crisis intervention. All therapies emphasize Dialectical Behavioral Therapy (DBT) in assisting residents to address their treatment needs. Treatment with residents is family focused throughout placement. There is constant communication with families and they are strongly encouraged to participate in their child's treatment.

Children are evaluated for medication therapy and receive ongoing assessment and treatment from a psychiatrist and psychiatric nurse practitioner. Social workers maintain on-going communication with all service providers to assure quality care. Social workers at the Children's Home work in collaboration with community agencies such as Departments of Social Services and NYS Office of Children & Family Services to assure the individual needs of the child are being met and the child is returned to family or graduated to another therapeutic program as soon as the child is ready. The social worker works with the child, family and community agencies to develop a supportive discharge plan.

Other direct clinical services include individual crisis management services planning, safety planning for the child, child-family meetings and community meetings on campus residences. Indirect services include progress note documentation, collaboration and treatment planning and discharge planning.

For program specific services, please refer to the individual program description.

EDUCATION PROGRAM

The Children's Home is licensed by the New York State Education Department to provide specialized educational services in an on-campus school to children in the following programs: Residential Treatment Center; Diagnostic Program; Day Treatment Program; Day School Program. We also contract with Stillwater Residential Treatment Facility in Greene, New York.

PHILOSOPHY

While in treatment at the Children's Home, students are provided with an educational program in a safe and highly structured environment. It is the goal of this program to enhance each student's academic stature as well as provide a behavioral structure which will afford them an opportunity to attain a greater degree of success during their educational years and beyond. The education staff work within a multi-disciplinary team to ensure quality care to the children we serve.

SERVICES

Students attend 6:1:1 or 8:1:1 classroom settings. Education instruction includes the core subjects of Math, Language Arts, Science and Social Studies as well as the special area subjects of Physical Education, Music, Art, Computers, Industrial Arts and Health. Related services which include Speech & Language, Remedial Reading and Guidance are also offered.

The education program provides both a regular education curriculum and special education services. If a student enters our program as a regular education student, he/she is provided with the general education curriculum, but afforded the opportunity to benefit from the specialized structure and resources of the program.

If a student enters our program through Department of Social Services or another social service agency as a classified student, he/she is reviewed by our Committee of Special Education within 60 days of admission. An Individualized Education Program Plan (IEP) is developed and implemented based upon the individual strengths, abilities, challenges and needs of the student. If a student is placed in our program by the Committee on Special Education (CSE) of a school district, the school district maintains CSE responsibility and works with Children's Home staff to implement the IEP. Students receive report cards each quarter and high school students in grades 9-12 and receive credits for the completion of course works. Students are afforded the opportunity to participate in the New York State Assessments specific to their grade.

CALENDAR

The on-campus school offers a 12 month education program for its students. There are 180 instructional days September-June and a 6 week summer program in July-August. Each school day is 6 hours in length.

FRIENDSHIP AND MENTORING

The Children's Home acknowledges the importance of stable, caring, responsible adults in the lives of the children we serve. The "Friend to a Child" program provides adult volunteers to mentor children who have little or no visiting resources. This special one-on-one relationship provides the children with good role models who act as a recreational resource and confidante providing an opportunity to reinforce positive self image and teach independent living skills.

An application inquires into a person's motivation for volunteering, prior experiences with children at-risk or emotionally disturbed children, in addition to training, education and other qualifying factors. The interview assesses maturity, physical ability, commitment level and recreational interests. References are checked by the Volunteer Coordinator and clearances are obtained through the Broome County Security Division, the New York State Central Register for Child Abuse and Department of Motor Vehicles. Training is provided by the Agency for each volunteer.

To become a volunteer mentor, one must be:

- a responsible adult – age 21 or over
- someone who enjoys children and is able to spend time on a regular basis
- able to meet State guidelines

In addition to one-on-one mentoring, other volunteer opportunities exist.

HEALTH SERVICES

The Health Services Department provides a wide variety of services for residents and staff in all of the programs. Physical examinations are conducted for both residents and staff on an initial and annual basis.

Ongoing nursing and medical care is provided on site for minor problems and triage is done for complicated medical problems needing community provider follow up. Health Services staff provide transportation for residents to eye and dental exams as well as other outside referrals.

The Health Services staff oversees administration and coordination of all medications prescribed and administered to residents on campus and home visits. Additionally, staff provides educational activities as needed to residents and Children's Home staff.

Provision of psychological and psychiatric care including assessment, counseling, testing, prescribing and monitoring of medication is provided through our clinical services.

INDEPENDENT LIVING SKILLS

UPDATED MATERIAL WILL BE PROVIDED

PLANNING AND PERFORMANCE IMPROVEMENT

The Children's Home stands committed to insuring the provision of comprehensive, high quality services to children and families. To meet that end, the organization seeks to continuously improve its performance in a planned and systematic manner. This department coordinates the development and implementation of the Agency-wide Strategic Plan. It also engages in ongoing data collection activities, the results of which are utilized to set and measure progress toward achieving key outcomes.

The Planning and Performance Improvement Department routinely assesses constituent needs, levels of satisfaction and perceptions of care. At a minimum of one time per year, the Planning and Performance Improvement Department administers surveys and/or focus groups with children, families, employees, community agencies, and members of the Agency's Board of Directors. Survey findings are analyzed and delivered to work groups within the organization in a manner that facilitates identification of needs, priorities, and strategies for quality improvement, program planning, and evaluation.

The organization measures itself to determine progress over time. Quarterly reports are presented to its governing body, Agency personnel, and key constituents, as appropriate, to facilitate awareness of operations and accomplishments. With particular focus on processes that are high-risk, high-volume, problem-prone, or costly, the Planning and Performance Improvement Department participates in an ongoing program of evaluation and research. Historical data is considered along-side emerging best practices, industry trends, and Agency performance indicators to ensure informed decision making in setting benchmarks and developing programs that effectively further the organization's mission, vision, and values.

RECREATION

It is the goal of the Recreation Department to enhance the lives of children through play. We provide opportunities for children to play and be creative - a natural way of being. Play allows children to be themselves without fear of censure or consequence. This is of great therapeutic value for children and a wonderful opportunity for staff to engage kids in meaningful and profound ways.

There are the moments when a child is recognized for being the most valuable player on the team or scoring the winning run or goal. These are great moments - when we all cheer and feel proud. But just as valuable is the first time a child jumps in the deep end of the pool and overcomes his fear of deep water or the child who gets his first hit in a baseball game after a dozen strikeouts.

The kids play traditional sports such as softball, basketball and soccer leagues, as well as less traditional activities such as chess club, art expression, photography and videography. We also publish a monthly newsletter for our budding journalists.

SPIRITUAL LIFE

The Spiritual Life Program offers each young person the unconditional love of an understanding, forgiving God (or Higher Power). In doing so, we honor and nurture the faith tradition of the young person and his or her family.

The ministry of the Spiritual Life Program can be summed up in three words: Sanctuary, Grace and Hope. Sanctuary means creating a safe place where young people can explore their thoughts and feelings as they contemplate the deeper meanings of life and faith. Grace seeks to surround every young person with unconditional love and acceptance while at the same time enforcing the boundaries and structures necessary for living in community. Hope offers the assurance that life is worth living and that better days are possible.

As young people experience sanctuary, grace and hope in their relationships with staff members and with each other, they are encouraged to see God (Higher Power) as the ultimate giver of these gifts. Our prayer is that the positive seeds of life and faith planted here at the Children's Home will take root and blossom in the lives of our young people.

STAFF EDUCATION AND DEVELOPMENT

The Children's Home is committed to the professional growth and continuous learning of all its employees, and provides them with a comprehensive, mission-focused training and development program. The on-going success of the Children's Home will require well-trained and effective employees. Therefore, the Staff Education and Development Department cooperates across all organizational levels in the development and delivery of the full range of training courses, alternative delivery methods, and techniques necessary to achieve our goals for a successful future.

SUPPORT SERVICES

BUSINESS OFFICE AND INFORMATION TECHNOLOGY (IT)

The Business Office encompasses all aspects of the business cycle for a \$17 million agency including payables, receivables and financial reporting. Personnel / payroll services are provided to 300 employees, striving to make available the best services and benefit packages possible to our most important resources. In addition, we are responsible for meeting the training needs of the staff from their initial orientation training through continued updates and enhanced education during their tenure at the Agency.

The IT Department provides hardware and software support for the 300 personal computers, networks and telecommunication needs of the Agency.

COMMUNITY & DONOR RELATIONS

The Children's Home Office of Community & Donor Relations promotes program mission by engaging the community through advocacy, education, volunteers and charitable gifts. Annual special events raise awareness, funds and friends. They include the Garden of Hope, the Maggie Memorial Charity Golf Tournament, the Ice Cream Social and other one-time events run by community members.

Public presentations by staff to congregations, businesses, and service organizations for education and advocacy are coordinated through this office. Communications include website management, media connections and press releases, newsletters, program brochures, annual report and the Children's Artwork Calendar.

Volunteers for short-term projects including Day of Caring are coordinated through this office. Donations from foundations, businesses, religious organizations and individuals help offset costs for capital projects, start-up program costs as well as extra items for the children not covered by our reimbursements.

FACILITIES MANAGEMENT

The goal of the Maintenance/Custodial Department is to maintain the Children's Home and all owned or leased properties in a safe, secure and healthy manner for the nurturing of children, staff and visitors to the Children's Home.

The Maintenance Department supports all Agency programs by using a preventive maintenance program, conducting bi-weekly inspections, vehicle fleet safety inspections, fulfilling maintenance request forms, and preparing for outside inspectors, such as State Fire Marshall, Health Department, insurance agency and accrediting organizations.

The primary objective is to have a safe aesthetically pleasing environment for our residents, staff and consumers, both parents and vendors.

FOOD SERVICE

The Children's Home offers a full service Food Service Department. All dietary guidelines set by the Federal Child Nutrition Program are met. They serve three meals each day to approximately 170 children, 365 days per year.

Effective July 1, 2008 the Children's Home opted out of the school lunch program, however we will continue to participate in the school breakfast program.

In addition, meals are provided for special events, such as weekly special residential meals, the Thanksgiving "Feastival," the Agency Holiday Party, and end of school year exercises in June. They also provide wonderful support as needed for many other agency and program activities throughout the year.

HISTORIC INFORMATION

The Children's Home began May 31, 1912 as a Deaconess Home of the Wyoming Conference of the Methodist Church. The first location was at 21 Edwards Street, Binghamton, New York, to help immigrant women and families that were coming in abundance to the area and then became a refuge for children as that need increased.

By 1915, the number of children needing care required the home to relocate to 190 Floral Avenue, Johnson City, New York. At this time, it became known as the Children's Home.

In 1918, the Children's Home moved to its present location, the former Macomber Farm in Hillcrest, New York. The property was purchased for \$20,000; the majority of which, \$15,000, came from the charitable donation of Mrs. F.H. "Grace" Haskins, while the remaining \$5,000 was paid by the Wyoming Conference of the United Methodist Church.

The Children's Home continued to grow and was incorporated by the State of New York in April of 1919. At this time, there were two other orphanages located in Broome County; St. Mary's Home established by the Catholic Church and the Susquehanna Valley Home, a private non-profit agency. Today, the Children's Home is the only one of the three agencies that continues to operate. Its survival is attributed to having developed a continuum of care that includes, but is not limited, to Residential Care and Foster Care.

Currently, the Children's Home, located in Greater Binghamton, New York, is a private not-for-profit organization offering four primary care areas to help children and their families: Residential, Educational, Preventive and Therapeutic Care.

Our employees and foster families are dedicated to and trained in providing quality services to vulnerable children with mental health issues and emotional problems.





**CHILDREN'S HOME
1182 CHENANGO STREET
BINGHAMTON, NY 13901**

**Phone: 607-772-6904
Fax: 607-723-2617
Toll Free: 800-772-6904
E-mail: info@chowc.org
Web: www.chowc.org**